

Wendy Lee

<http://creativeleeyours.com/>

wendy@creativeleeyours.com

Softly Blended Blooms



Supplies needed:



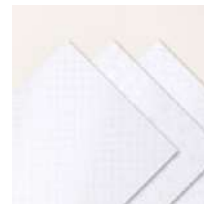
Balloon Festoon
Photopolymer Stamp Set
(English)
[167602]



Basic White 8 1/2" X 11"
Thick Cardstock
[159229]



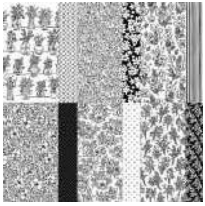
Basic White 8 1/2" X 11"
Cardstock
[166780]



Irresistible Designs 12"
X 12" (30.5 X 30.5 Cm)
Specialty Designer Series
Paper
[165305]



2026-2028 In Color™
12" X 12" (30.5 X 30.5
Cm) Pearlized Specialty
Paper
[167766]



Artisan Sketched Garden
12" X 12" (30.5 X 30.5
Cm) Designer Series
Paper
[167752]



Crisp Cantaloupe Classic
Stampin Pad
[167680]



Tuxedo Black Memento
Ink Pad
[132708]



Crisp Cantaloupe 3/8" (1
Cm) Bordered Ribbon
[167552]



2026-2028 In Color™
Dots
[167546]



Blending Brushes
[153611]



Take Your Pick
[144107]



Paper Trimmer
[152392]



Bone Folder
[102300]



Stampin' Seal
[152813]



Stampin' Dimensionals
[104430]



Mini Glue Dots
[103683]

Project Recipe:

1. Additional supplies can be found in my Amazon Craft Room Favorites Shop at <https://amzn.to/46SfLQB>

*Scissors

Project Layers (Imperial):

- 8-1/2" x 5-1/2" Thick Basic White CS
- 3" x 3" Specialty Paper
- 3-3/8" x 3-3/8" DSP
- 2" x 1/2" Specialty Paper
- 2" x 3/4" DSP
- 3-3/8" x 4-5/8" Basic White CS

- Scrap DSP
- Approx. 3-1/2" Ribbon