

Wendy Lee

<http://creativeleeyours.com/>

wendy@creativeleeyours.com

# Scalloped Gift Box



## Supplies needed:



Scalloped Blooms  
Bundle (English)  
[167647]



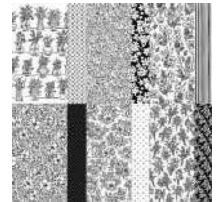
Scalloped Window  
Boxes  
[167655]



Basic Black 8-1/2" X 11"  
Cardstock  
[121045]



Basic White 8 1/2" X 11"  
Cardstock  
[166780]



Artisan Sketched Garden  
12" X 12" (30.5 X 30.5  
Cm) Designer Series  
Paper  
[167752]



Barely Blush Stampin'  
Blends Combo Pack  
[167667]



Crisp Cantaloupe  
Stampin' Blends Combo  
Pack  
[167669]



Golden Glow Stampin'  
Blends Combo Pack  
[167682]



Peaceful Pine Stampin'  
Blends Combo Pack  
[167668]



Hydrangea Hue Shimmer  
Brush  
[167663]



Peaceful Pine 3/8" (1  
Cm) Bordered Ribbon  
[167551]



2026-2028 In Color™  
Dots  
[167546]



Stampin' Cut & Emboss  
Machine  
[149653]



Take Your Pick  
[144107]



Paper Trimmer  
[152392]



Bone Folder  
[102300]



Stampin' Seal  
[152813]



Multipurpose Liquid  
Glue  
[110755]



Mini Glue Dots  
[103683]



Stampin' Dimensionals  
[104430]

## Project Recipe:

1. Additional supplies can be found in my Amazon Craft Room Favorites Shop at <https://amzn.to/46SfLQB>

\*Scissors

Project Layers (Imperial):

- (2) 3-3/8" x 3-3/8" DSP
- (4) 3-3/8" x 7/8" DSP
- 1-7/8" x 1" Basic White CS
- 2-1/2" x 1-1/2" Basic Black CS- die cut
- Scrap DSP-fussy cut
- Approx. 3-1/2" Ribbon