

Wendy Lee

<http://creativeleeyours.com/>wendy@creativeleeyours.com

Magnetic Mini Candy Box

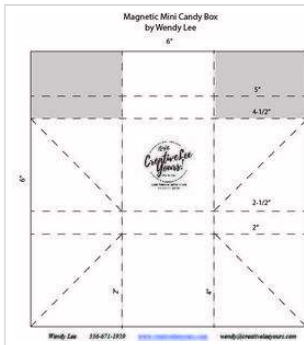


2 018-2019 Catalog Open House Gift

Supplies needed:

- Hand Delivered Photopolymer Stamp Set [146808]
- Basic Black 8-1/2" X 11" Card Stock [121045]
- Rich Razzleberry 8-1/2" X 11" Card Stock [115316]
- Whisper White 8-1/2" X 11" Card Stock [100730]
- Share What You Love Specialty Designer Series Paper [146926]
- Tranquil Tide Classic Stampin' Pad [147146]
- 1-1/2" Circle Punch [138299]
- 1-1/4" Circle Punch [119861]
- Big Shot [143263]
- Big Shot Magnetic Platform [130658]
- Layering Circle Framelits Dies [141705]
- Stampin' Trimmer [126889]
- Paper Snips Scissors [103579]
- Simply Scored [122334]
- Bone Folder [102300]
- SNAIL Permanent Adhesive [104332]
- Liquid Multipurpose Glue [110755]
- Glue Dots [103683]

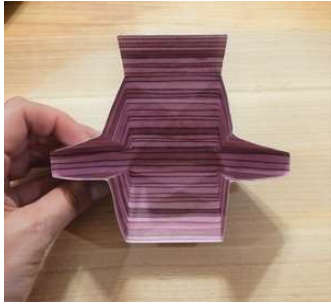
Project Recipe:



1. Score 6" x 6" DSP with the Simply Scored as shown in template.

Clip away the squares as shown in the template in the upper left and right corners. This creates the box flap.

Fold along each score line. For best results, run the bone folder along each of the folds for a nice crisp edge.



2. Push side in as shown to fold box.



3. A Ghirardelli square fits perfectly in the center section.

The sides will slide into each other as you close up the box.



4. Here is what it looks like once the sides are all folded in.



5. Punch a 1-1/2" circle from scrap of Basic Black cardstock.



6. Using the Bog Shot with the Magnetic Platform, die-cut scrap of Rich Razzleberry cardstock with the 2nd smallest circle from the layering Circles framelit dies.



7. Stamp sentiment from Hand Delivered host set in Tranquil Tide ink on scrap of Whisper White cardstock.

Punch out with 1-1/4" circle punch.



8. Adhere circles together with SNAIL adhesive.

Adhere top section of circles to box flap so it is centered side to side.



9. This is a better look at the circle adhered to the flap.



10. Adhere magnet to flap with liquid adhesive. be sure to let this completely dry before proceeding.

Note: I ordered the magnets online from a company called TotalElement out of Colorado. I used the 1/4" size for this project.



11. Drop the 2nd magnet on the front of the flap. It will snap to align.



12. Fold flap down along 2nd score line.

Add glue dot to magnet.



13. Fold bottom up along last score line.

Magnet will adhere to inside of bottom section.



14. When you unfold the bottom section you can see the magnet.



15. Fold box and the magnets will snap together to hold the flap closed.

Hope you enjoy!