

Wendy Lee

<http://creativeleeyours.com/>

wendy@creativeleeyours.com

Pull and Turn Box



Diamonds Team meeting

Supplies needed:

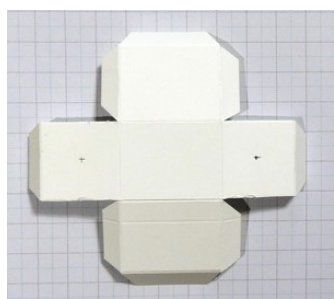
- Cake Soirée Wood-Mount Stamp Set [145521]
- Cake Soirée Clear-Mount Stamp Set [145745]
- Sweet Soirée Specialty Designer Series Paper [145564]
- Whisper White 8-1/2" X 11" Thick Cardstock [140272]
- Versamark Pad [102283]
- Silver 1/8" Ribbon [132137]
- Silver Stampin' Emboss Powder [109131]
- Embossing Buddy [103083]
- Heat Tool [129053]
- 1" Circle Punch [119868]
- 1/8" Circle Handheld Punch [134365]
- Simply Scored [122334]
- Big Shot [143263]
- Seasonal Layers Thinlits Dies [143751]
- Stampin' Trimmer [126889]
- Paper Snips Scissors [103579]
- Bone Folder [102300]
- Tear & Tape Adhesive [138995]
- Liquid Multipurpose Glue [110755]

Project Recipe:

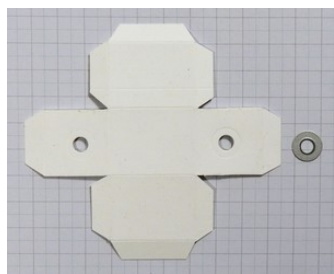
<p>Box Inside 4-7/8"</p> <p>4-1/2"</p>	<p>1. Box Inside:</p> <p>Score 4-1/2" x 4-7/8" Thick White cardstock at 3/8", 1-5/8", 3-1/4" and 4-1/2" along the long side.</p> <p>Turn and score at 3/8", 1-5/8", 2-7/8" and 4-1/8" along the shorter side.</p>
<p>3/8" tab</p> <p>3/8" tab</p> <p>3/8" tab</p> <p>3/8" tab</p> <p>3/8"</p> <p>5/8"</p> <p>3/8"</p> <p>Punch (2)</p>	<p>2. Cut along lines marked in red on the template, making sure to leave 3/8" wide tabs where noted.</p> <p>I found it easiest to cut the inside lines before clipping the corners of the tabs.</p>



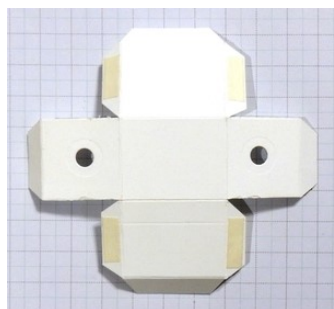
3. Using the 1" Circle Punch, punch (2) Thick White cardstock circles.



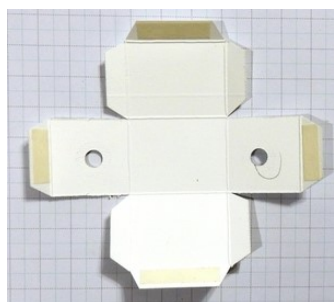
4. Use a pencil to mark the center of the outside (2) panels as shown in the template.



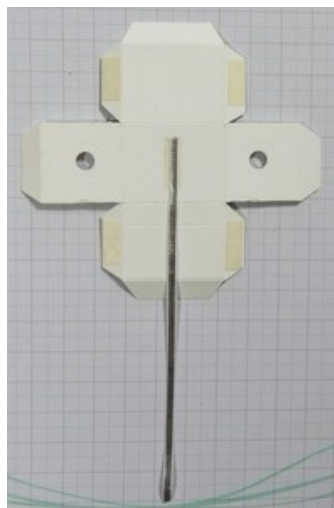
5. Using the Big Shot and the circle die from the Seasonal Layers thinlit dies, die-cut the holes where you marked with a pencil.



6. Apply Tear & Tape along side tabs on the outside of the box.

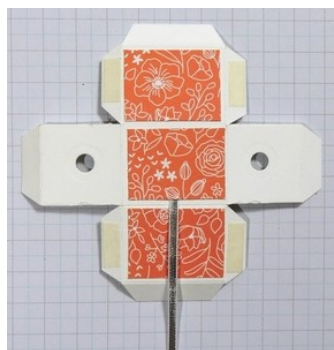


7. Flip box inside over and apply Tear & Tape along tabs on the inside of the box.



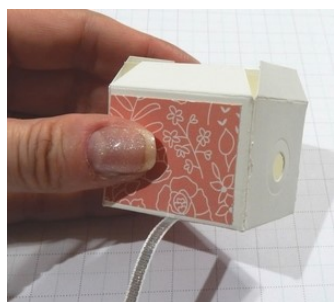
8. Apply Tear & Tape along center panel (this will be the bottom of the inside box).

Remove backing tape and adhere end of 6" ribbon to box.

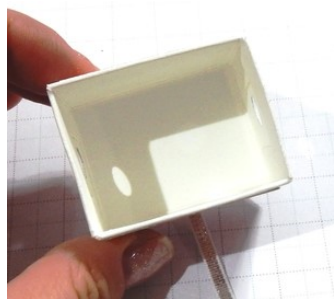


9. Adhere (3) 1-1/8 x 1-1/2" pieces of designer paper to center panels with Tear & Tape.

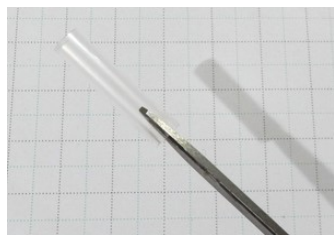
Note: on the bottom panel, do not cover the ribbon. It will need to be loose.



10. Remove backing paper from outside tabs and adhere box together.

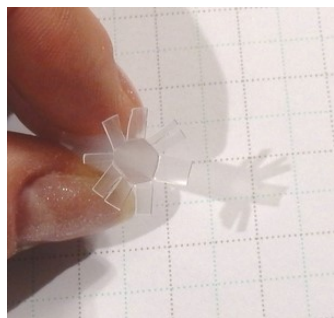


11. Remove backing paper from inside tabs and fold down to clean finish the top edge of the box.



12. Using Paper Snips, clip (2) pieces from a straw approx. 1" long.

Clip in along one end of straw about 5 -8 times.



13. Flatten straw end where snipped.



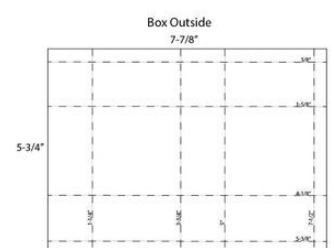
14. Slide straws into the holes on each side of the box.

The flattened snipped end will be to the inside of the box.



15. Apply liquid adhesive to punched circle and adhere to inside of box to secure snipped end of straws in place.

Let dry completely.

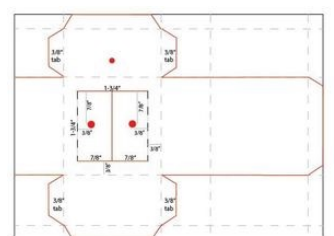


16. Box Outside:

Score $5\frac{3}{4}$ " x $7\frac{7}{8}$ " Specialty Designer Paper at $1\frac{1}{4}$ ", $3\frac{3}{4}$ ", 5 " and $7\frac{1}{2}$ " along the long side.

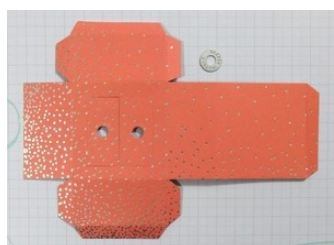
Turn and score at $\frac{3}{8}$ ", $1\frac{5}{8}$ ", $4\frac{1}{8}$ " and $5\frac{3}{8}$ " along the shorter side.

I recommend using cardstock or a heavier weight designer paper for the Box Outside.



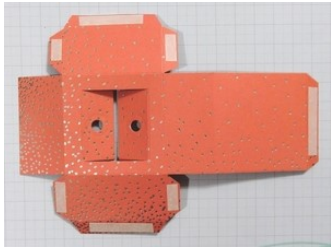
17. Cut along lines marked in red on the template, making sure to leave $\frac{3}{8}$ " wide tabs where noted.

I found it easiest to cut the inside lines before clipping the corners of the tabs.



18. Use a pencil to mark the center of the inside (2) panels as shown in the template.

Using the Big Shot and the circle die from the Seasonal Layers thinlit dies, die-cut the holes where you marked with a pencil.



19. Apply Tear & Tape along tabs on the outside of the box.



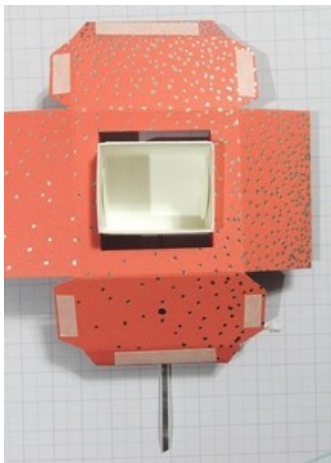
20. Place inside box in cut out of outside box, sliding the straws through the holes in the outside box.



21. Clip in along end of straws about 5 -8 times.

Flatten end. This will keep the straw from pulling out of the hole, but allow it to spin.

Note: you may need to clip away some of the straw so snipped ends will spin without catching along the box sides.



22. Punch a 1/8" hole in the front flap of the outside box



23. Stamp sentiment from Cake Soiree stamp set in Versamark ink on 7/8" x 1-1/4" designer paper and emboss in Silver embossing powder.



24. Adhere layer to bottom of inside box with Tear & Tape.



25. String end of ribbon through punched hole.

Remove backing paper and close outside box.

Position inside box so sentiment is displaying. Knot end of ribbon to keep it from pulling out.



26. Pull the string and the inside box will turn.



27. A Ferrero Rocher fits perfectly inside the box.

This would also be a great box to use to gift a ring.

Hope you enjoy!